

2



EATS A



© 2000 BIRD
BY BIRD
ARTIST'S NAME

WOLVERINE

EATS A



2



Bear

3



EATS K



WEASEL



Grouse

EATS K



3

4



EATS Q



HAWK



Squirrel

EATS Q



4

5



EATS J



VELVET FULVUS. (MEX.)

AMERICAN RED-FOX.

FOX



Rabbit

EATS J



5

6



EATS 10



OWL



Rat

EATS 10



9

7



EATS 9



WOLF



Elk

EATS 9



7

8



RACCOON

ALREADY ATĚ



8

9



BY 7



CERVUS CANADENSIS DW

ELK



Wolf

BY 7



6

10



BY 6



RAT



Owl

BY 6



10

J



BY 5



RABBIT



Fox

BY 5



J

Q



BY 4



SQUIRREL



Hawk

BY 4



Q

K



BY 3



GROUSE



Weasel

BY 3



K

A



BY 2



BEAR



Wolverine

BY 2



V

2



EATS A



MOUSE



Elephant

EATS A



2

3



EATS K



HYENA



Lion

EATS K



3

4



EATS Q



HONEY BADGER



Queen Bee

EATS Q



4

5



EATS J



CROCODILE



Wildebeest

EATS J



5

6



EATS 10



SECRETARY BIRD



Cobra

EATS 10



9

7



EATS 9



CHEETAH



Gazelle

EATS 9



7

8



HIPPO

ALREADY ATE^{zzz}

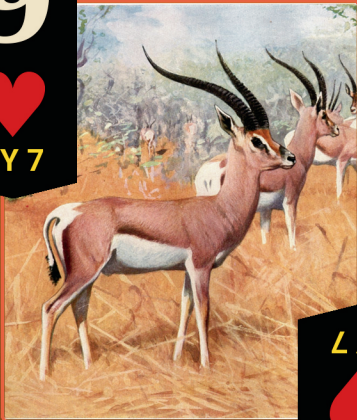


8

9



BY 7



GAZELLE



Cheetah

BY 7

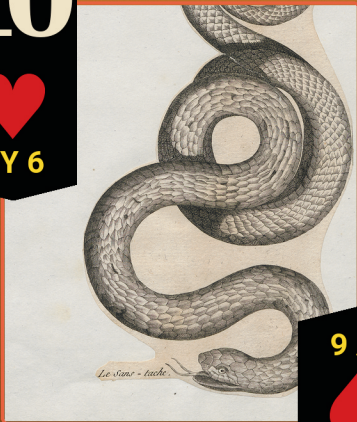


6

10



BY 6



COBRA



Secretary Bird

BY 6



10

J



BY 5



WILDEBEEST



Crocodile

BY 5



J

Q



BY 4



QUEEN BEE



Honey Badger

BY 4



Q

K



BY 3



LION



Hyena

BY 3



K

A



BY 2



ELEPHANT



Mouse

BY 2

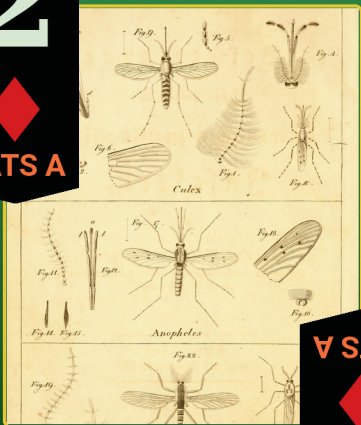


V

2



EATS A



MOSQUITO



Gorilla

EATS A

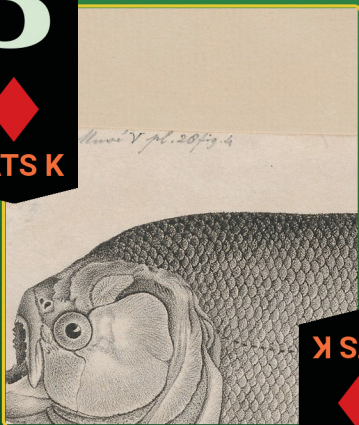


2

3



EATS K



PIRANHA



Tapir

EATS K



3

4



EATS Q



GOLIATH BIRDEATER



Hummingbird

EATS Q



4

5



EATS J



Анаконда (Eunectes marinus), 1/2 натур. Größe.

ANACONDA



Capybara

EATS J



5

6



EATS 10



HARPY EAGLE



Sloth

EATS 10



9

7



EATS 9



JAGUAR



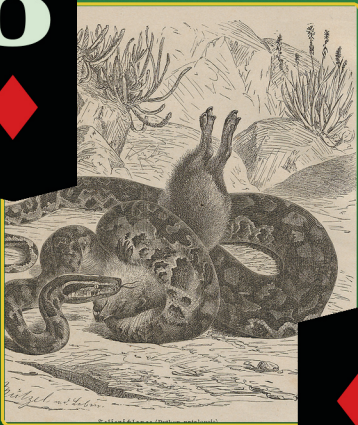
Caïman

EATS 9



7

8



PYTHON

ALREADY ATE⁷⁷



8

9



BY 7



CAIMAN



Jaguar

BY 7

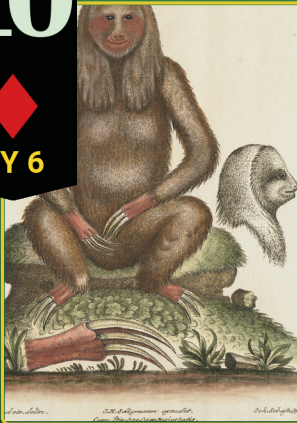


6

10



BY 6



SLOTH



Harpy Eagle

BY 6



10

J



BY 5



CAPYBARA



Anaconda

BY 5



J

Q



BY 4



HUMMINGBIRD



Goliath Birdeater

BY 4



Q

K



BY 3



TAPIR



Piranha

BY 3



K

A



BY 2



GORILLA



Mosquito

BY 2

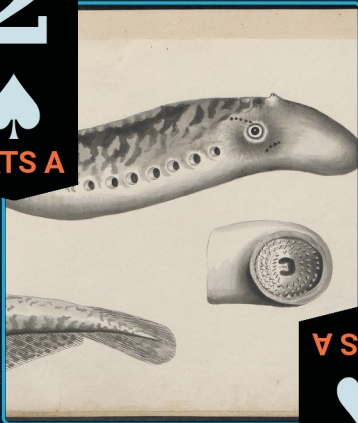


V

2



EATS A



SEA LAMPREY



Great White Shark

EATS A



2

3



EATS K



OCTOPUS



Crab

EATS K



3

4



EATS Q



SEA TURTLE



Jellyfish

EATS Q



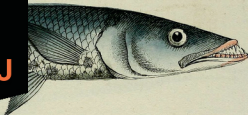
4

5



EATS J

Sphyraena Picuda.^{29.}



Atherina Hepselus.



BARRACUDA

EATS J



5



Clownfish

6



EATS 10



DOLPHIN



Tuna

EATS 10

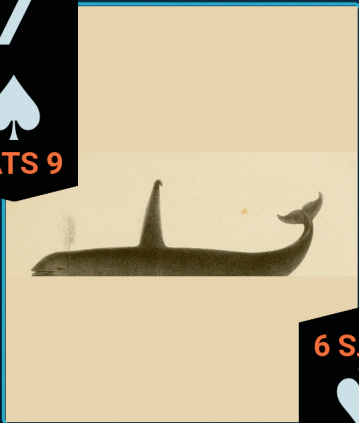


9

7



EATS 9



ORCA



Seal

EATS 9



7

8



RHINODON TYPICUS.
Pisces, Plate 26

WHALE SHARK

ALREADY ATE^{???}



8

9



BY 7



COMMON HARBOR SEAL
PHOCA VITULINA LINN.

Length 4 in 5
Shores of Nor

SEAL



Orca

BY 7

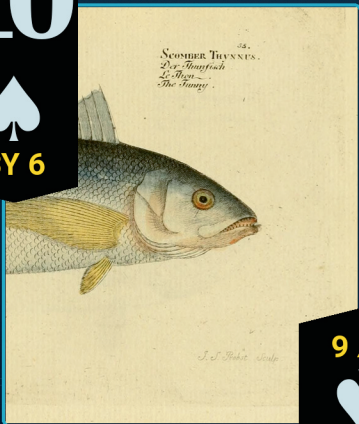


6

10



BY 6



TUNA



Dolphin

BY 6



10

J



BY 5



CLOWNFISH



Barracuda

BY 5



J

Q



BY 4



JELLYFISH



Sea Turtle

BY 4

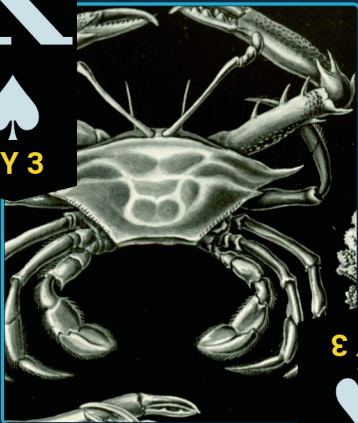


Q

K



BY 3



CRAB

BY 3



K



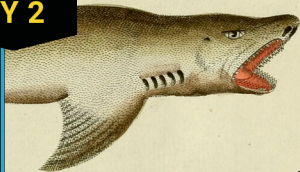
Octopus

A



BY 2

119.
SQUALUS CARCHARIAS.
Der Menschenfresser.
Le Requin.
The White Shark.



GREAT WHITE SHARK

BY 2



V



Sea Lamprey

SEVEN ATE NINE

ON YOUR TURN

ACTION	PLAY	SUIT
MEET	Same rank	Shifts
BEAT	Higher rank	Same
EAT	Eater card	Shifts
YEET	Discard 1	Same
RETREAT	Leave trick	-

WINNING

Last to play wins the trick
Draw 1, score 1 from hand

FIRST TO 3 TRICKS WINS!

SETUP

Players	Deal	Draw Pile
2	15	22
3	12	10
4	10	12
5	9	7

Remaining cards form the draw pile.

STARTING

Clockwise from dealer, ask for an 8.
If no 8 is played, dealer leads any card.
Play continues clockwise.

SCORING

Each trick won = 1 point
Face-down scored cards track points.
First to 3 points wins!

HAND LIMIT

After each trick, all players may
discard and draw back to hand limit
(same as initial deal amount).